

Lift Truck OSHA Safety Inspection Compliance with Impacts Detections for Small Fleets



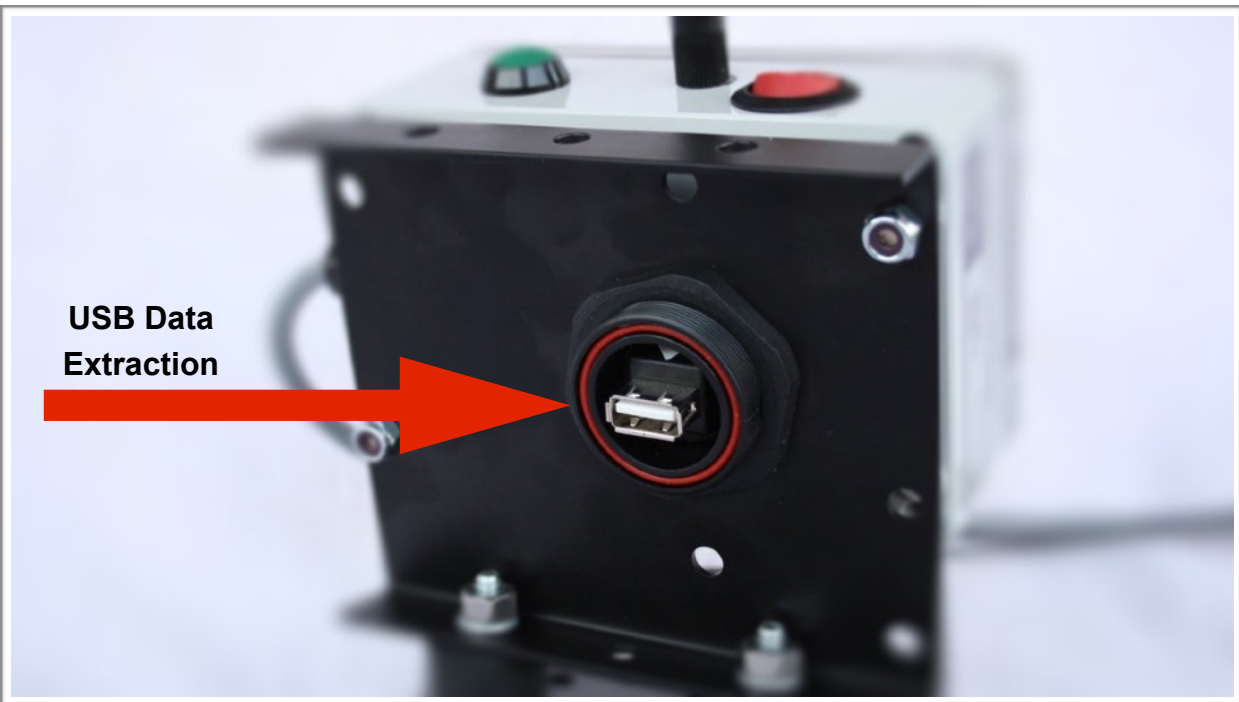
The **OSC2-LT** is a simple comprehensive unit designed to provide single lift truck or small fleet with the ability to monitor impacts and control that only certified operators are allowed access to the lift trucks and ensure that prior to shift use a safety check is done. Operating as a stand-alone unit the OSC2-LT will consistently and accurately provide management with permanent record of daily OSHA safety inspection compliance.

The system automatically prompts operator prior to shift usage to acknowledge a pass of fail safety check then records it in the system.

The unit is self-programmable by authorized system managers and is able to create usage reports in excel file format by simply downloading the data by USB.

The OSC2-LT is easy to install by the end user at approximately 1/2 hour.

Programming the unit is simple by just adding the operator codes to be recognized and changes can be made as the business changes.



Application for all kinds of material handling vehicles

- **Automatic OSHA daily safety checklist recordings** (*Daily, every 8 or 12 hours*)
 - Real time clock
 - Large LCD display, 2 lines x 16 characters, low temperature version
 - Default menu for five safety checklist groups (can be re-programmed by the end user)
 - Authorized operator keypad access control ID# input (End user programmable)
 - Flashing miniature strobe light (*Bright light will be deactivated every time the authorized operator ID# keypad input and/or OSHA safety checklist is done*)
 - Vehicle impact detection range from 0.5 to 16G's
 - Low impact detection shown to the operator on LCD display (Impact recorded)
 - High impact detection shown to the operator on LCD display and recorded
 - Strobe visual light alert for all high vehicle impacts detections
 - Management menu to configure the system and data extraction
 - USB data extraction
 - OSHA start time/date and duration to complete safety checklist cycle
 - Operator ID#
 - Vehicle ID#
 - Excel file format
 - Large recording memory (capability to record more than two year's of data)
 - Applicable for vehicle operating voltage from 12 to 55 VDC
 - Compact size digital indicator
 - Easy installation and set up, can be done by the end user in less than 1/2 hour, system requires only two wires electrical connection to vehicle power
- Note:** *System does not disable vehicle operation.*